

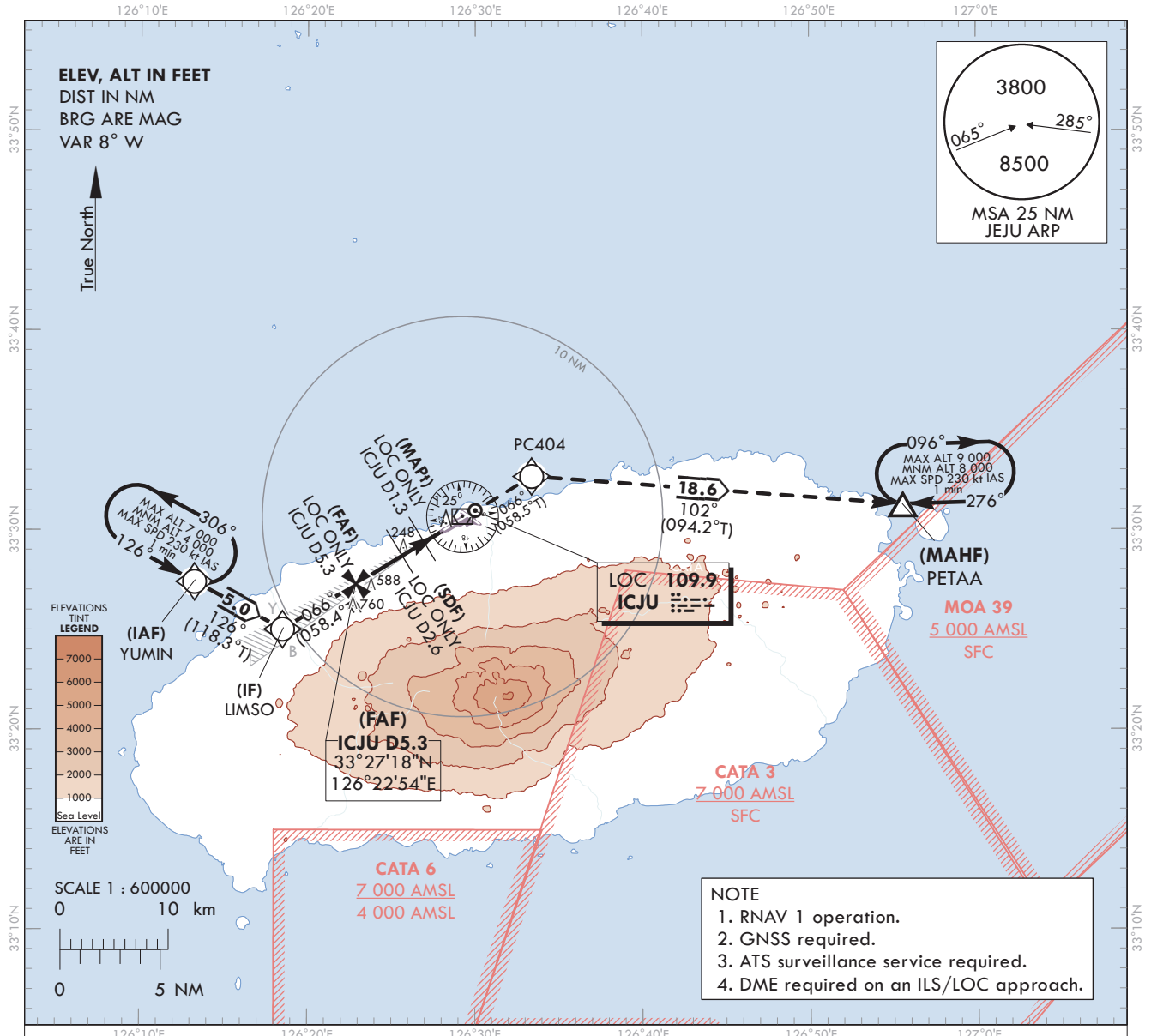
**INSTRUMENT
APPROACH
CHART - ICAO**

AERODROME ELEV 119 ft
HEIGHTS RELATED TO
THR RWY 07 - ELEV 87 ft

JEJU APP 121.2
124.05
JEJU TWR 118.2
118.55

JEJU/Jeju Intl(RKPC)
ILS Z or LOC Z RWY 07
CAT II

Note : Approach under ICAO Flight Procedures.

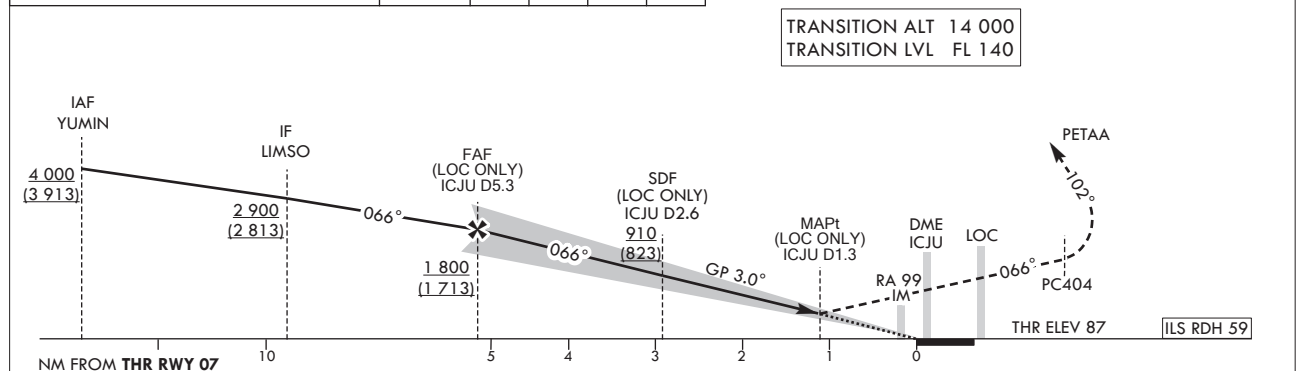


| RECOMMENDED PROFILE (LOC ONLY) | DME ICJU | 5 | 4 | 3 | 2 |
|--|----------|------------------|------------------|----------------|--------------|
| Final Approach Gradient 5.33%, 324 ft/NM | ALT(HGT) | 1 702 (1 615) | 1 379 (1 292) | 1 055 (968) | 731 (644) |

MISSED APPROACH

Climb to 8 000 ft on track of 066° to PC404, then RIGHT turn on track of 102° to PETAA and Hold.

TRANSITION ALT 14 000
TRANSITION LVL FL 140



| OCA (H) | | A | B | C | D | DL | | Knots | 60 | 90 | 120 | 150 | 180 | |
|----------------------|--------|-----------|---|---|---|----|-----------------|--|-----|-----|-----|-----|-----|--|
| Straight-in Approach | CAT-I | 287 (200) | | | | | Rate of descent | V/V fpm | 318 | 478 | 637 | 796 | 955 | |
| | LOC | 530 (443) | | | | | | * Timing Not authorized for defining MAPt. * Circling Not authorized. | | | | | | |
| | CAT-II | 187 (100) | | | | | | | | | | | | |

Change : Page control.

JEJU/Jeju Intl(RKPC)
ILS Z or LOC Z RWY 07
CAT II

AERONAUTICAL DATA TABULATION

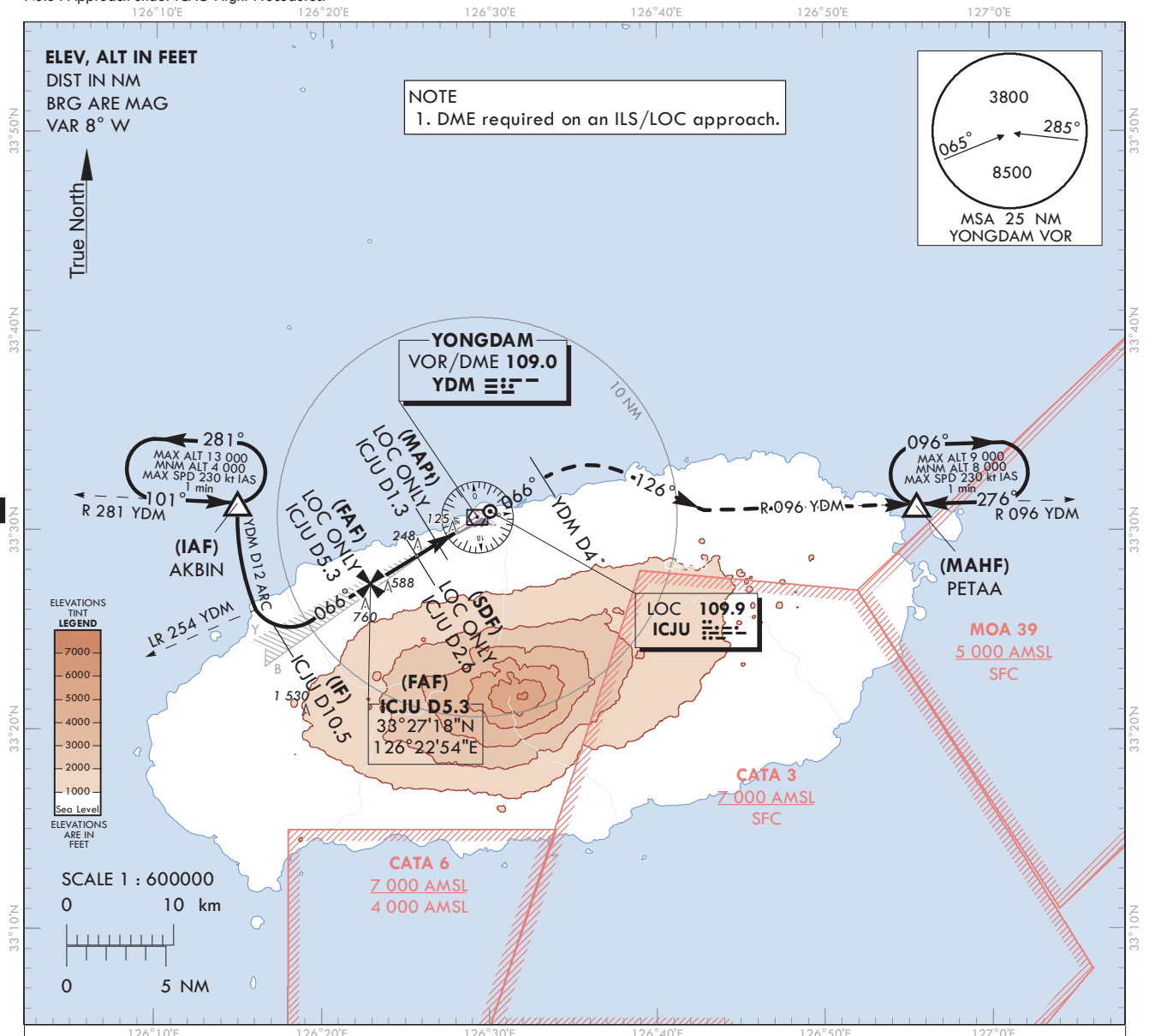
| ILS Z or LOC Z Approach to RWY 07 from YUMIN(IAF) | | |
|---|-------------------------|------------------------------|
| Fix/point | | Coordinates |
| YUMIN(IAF) | | 33°27'25.7"N 126°13'15.5"E |
| LIMSO(IF) | | 33°25'03.0"N 126°18'31.0"E |
| D5.3 ICJU(FAF LOC only) | BRG 66.15°/5.31 NM ICJU | 33°27'18.5"N 126°22'53.6"E |
| D2.6 ICJU(SDF LOC only) | BRG 66.17°/2.60 NM ICJU | 33°28'43.8"N 126°25'39.3"E |
| D1.3 ICJU(MAPt LOC only) | BRG 66.19°/1.30 NM ICJU | 33°29'24.8"N 126°26'58.8"E |
| THR RWY 07 | | 33°29'59.57"N 126°28'06.50"E |
| DME ICJU | | 33°30'09.0"N 126°28'15.7"E |
| PC404 | | 33°32'42.3"N 126°33'23.4"E |
| PETAA(MAHF) | | 33°31'18.0"N 126°55'34.0"E |

AERODROME ELEV 119 ft
HEIGHTS RELATED TO
THR RWY 07 - ELEV **87 ft**

| | | |
|------|-----|--------|
| JEJU | APP | 121.2 |
| | | 124.05 |
| JEJU | TWR | 118.2 |
| | | 118.55 |

JEJU/Jeju Intl(RKPC)
ILS Y or LOC Y RWY 07
CAT II

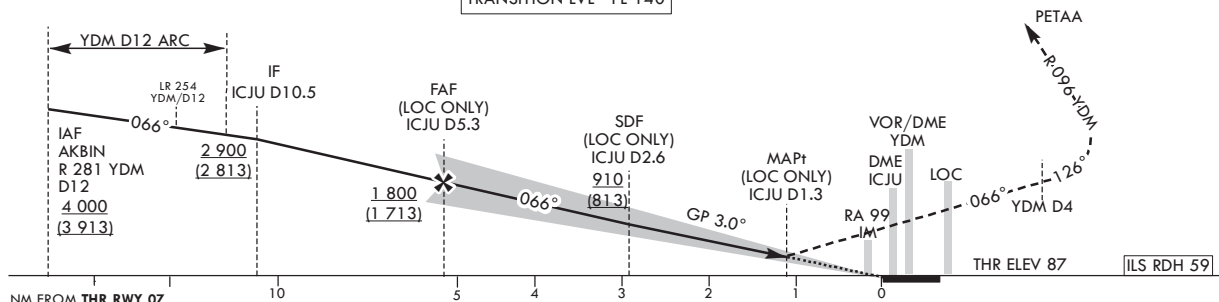
Note : Approach under ICAO Flight Procedures.



| RECOMMENDED PROFILE (LOC ONLY) | DME ICJU | 5 | 4 | 3 | 2 |
|--|----------|------------------|------------------|----------------|--------------|
| Final Approach Gradient 5.33%, 324 ft/NM | ALT(HGT) | 1 702 (1 615) | 1 379 (1 292) | 1 055 (968) | 731 (644) |

Climb straight ahead until YDM D4 then RIGHT turn to Intercept R 096 YDM to PETAA and Hold at 8 000 ft.

| | |
|----------------|--------|
| TRANSITION ALT | 14 000 |
| TRANSITION LVL | FL 140 |



| OCA (H) | | A | B | C | D | DL | | Knots | 60 | 90 | 120 | 150 | 180 |
|----------------------|--------|-----------|---|---|---|----|-----------------|--|-----|-----|-----|-----|-----|
| Straight-in Approach | CAT-I | 287 (200) | | | | | Rate of descent | V/V fpm | 318 | 478 | 637 | 796 | 955 |
| | LOC | 530 (443) | | | | | | * Timing Not authorized for defining MAPt. * Circling Not authorized. | | | | | |
| | CAT-II | 187 (100) | | | | | | | | | | | |

Change : Information of radial.

JEJU/Jeju Intl(RKPC)
ILS Y or LOC Y RWY 07
CAT II

AERONAUTICAL DATA TABULATION

| ILS Y or LOC Y Approach to RWY 07 from AKBIN(IAF) | | |
|---|--------------------------|------------------------------|
| Fix/point | | Coordinates |
| AKBIN(IAF) | 12 DME ARC /12.00 NM YDM | 33°31'21.5"N 126°14'55.3"E |
| D10.5 ICJU(IF) | BRG 66.10°/10.50 NM ICJU | 33°24'35.0"N 126°17'36.8"E |
| D5.3 ICJU(FAF LOC only) | BRG 66.15°/5.31 NM ICJU | 33°27'18.5"N 126°22'53.6"E |
| D2.6 ICJU(SDF LOC only) | BRG 66.17°/2.60 NM ICJU | 33°28'43.8"N 126°25'39.3"E |
| D1.3 ICJU(MAPt LOC only) | BRG 66.19°/1.30 NM ICJU | 33°29'24.8"N 126°26'58.8"E |
| THR RWY 07 | | 33°29'59.57"N 126°28'06.50"E |
| DME ICJU | | 33°30'09.0"N 126°28'15.7"E |
| YDM VOR/DME | | 33°30'41.3"N 126°29'15.3"E |
| D4.0 YDM | BRG 66.20°/4.00 NM YDM | 33°32'42.4"N 126°33'23.4"E |
| PETAA | BRG 96.03°/22.00 NM YDM | 33°31'18.0"N 126°55'34.0"E |

**INSTRUMENT
APPROACH
CHART - ICAO**

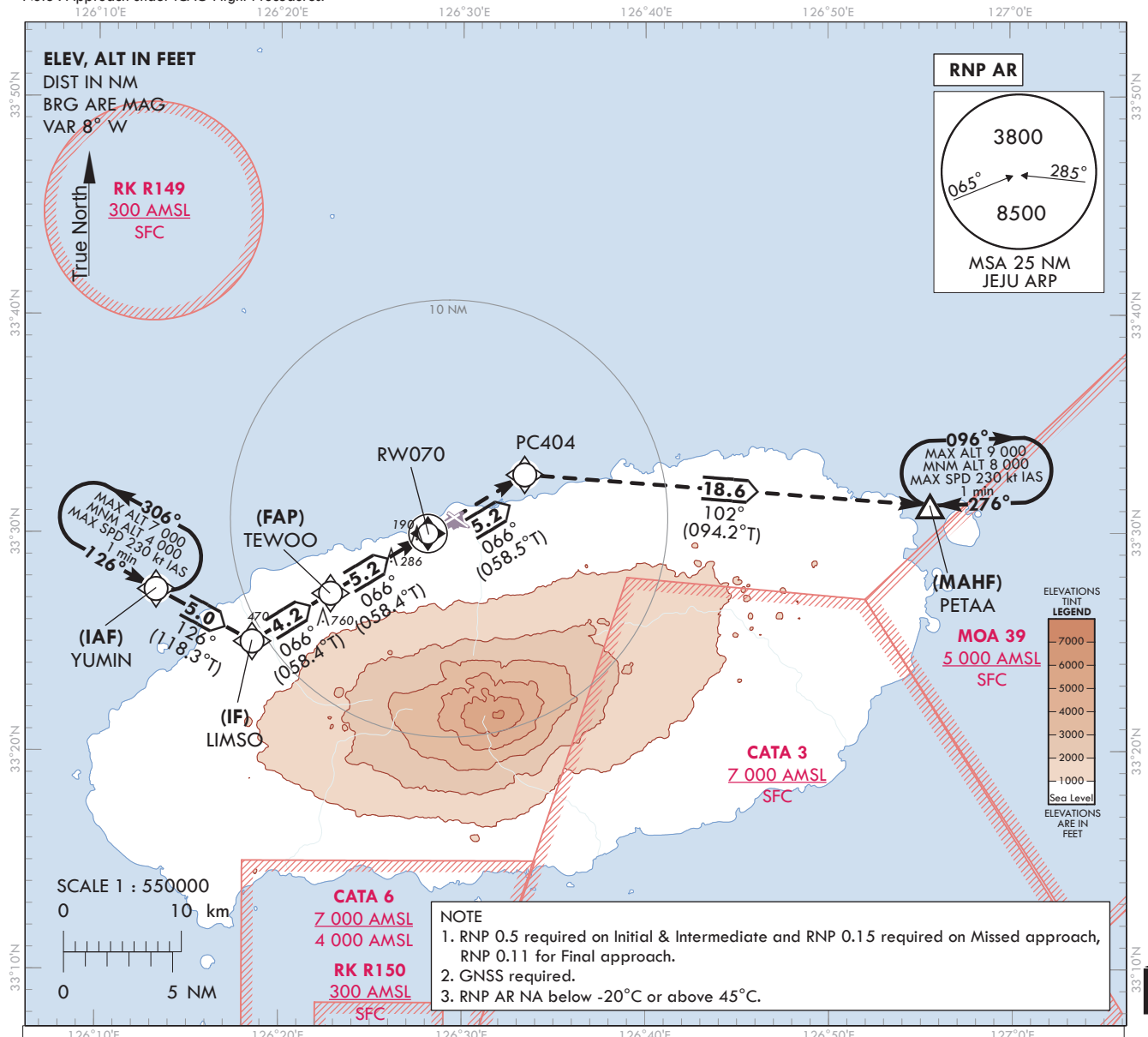
AERODROME ELEV 119 ft
HEIGHTS RELATED TO
THR RWY 07 - ELEV 87 ft

JEJU APP 121.2
JEJU TWR 124.05
118.2
118.55

JEJU/Jeju Intl(RKPC)

RNP Z RWY 07(AR)

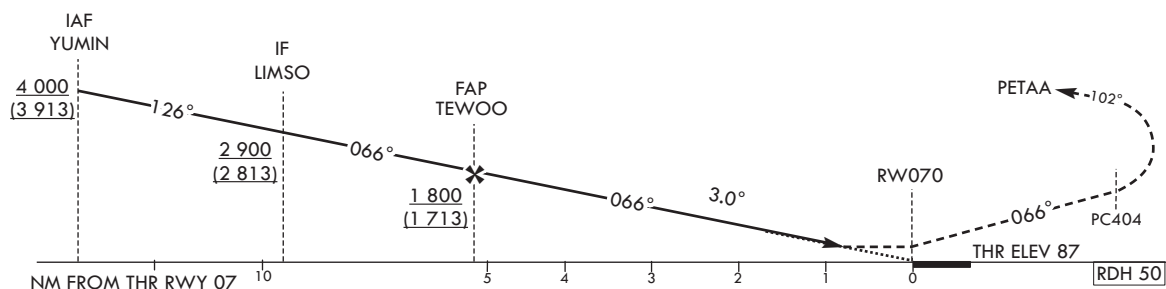
Note : Approach under ICAO Flight Procedures.



TRANSITION ALT 14 000
TRANSITION LVL FL 140

MISSED APPROACH

Climb to 8 000 ft on track of 066° to PC404, then RIGHT turn on track of 102° to PETAA.



| | | | | | | Knots | 60 | 90 | 120 | 150 | 180 | |
|----------------------|----------|-----------|---|---|---|--|---------|-----|-----|-----|-----|-----|
| OCA (H) | | A | B | C | D | Rate of descent | V/V fpm | 319 | 478 | 637 | 796 | 956 |
| Straight-in Approach | RNP 0.11 | 360 (273) | | | | * Timing Not authorized for defining MAPt. * Circling Not authorized. | | | | | | |
| | | | | | | | | | | | | |

Change : Information of NOTE.

JEJU/Jeju Intl(RKPC)
RNP Z RWY 07(AR)

AERONAUTICAL DATA TABULATION

Instrument Approach Procedure Coding Tables

RNP Z RWY 07(AR)

| Serial Number | Path Descriptor | Waypoint Identifier | Fly-over | Course/Track °M(°T) | Distance (NM) | Turn direction | Altitude (ft) | Speed (kt) | Coordinates | VPA/ RDH | Navigation specification | Remarks |
|---------------|-----------------|---------------------|----------|------------------------|------------------|----------------|------------------|---------------|------------------------------|-------------|--------------------------|----------------------------|
| 001 | IF | YUMIN | - | - | - | - | +4 000 | - | 33°27'25.7"N 126°13'15.5"E | - | RNP 0.5 | IAF |
| 002 | TF | LIMSO | - | 126(118.3) | 5.0 | - | +2 900 | - | 33°25'03.0"N 126°18'31.0"E | - | RNP 0.5 | IF |
| 003 | TF | TEWOO | - | 066(058.4) | 4.2 | - | +1 800 | - | 33°27'15.3"N 126°22'47.5"E | - | RNP 0.11 | FAP |
| 004 | TF | RW070 | Y | 066(058.4) | 5.2 | - | - | - | 33°29'59.57"N 126°28'06.50"E | -3.00/50 | RNP 0.11 | - |
| 005 | TF | PC404 | - | 066(058.5) | 5.2 | - | - | - | 33°32'42.3"N 126°33'23.4"E | - | RNP 0.15 | - |
| 006 | TF | PETAA | Y | 102(094.2) | 18.6 | - | - | - | 33°31'18.0"N 126°55'34.0"E | - | RNP 0.15 | - |
| 007 | HM | PETAA | Y | 276(268.2) | - | R | -9 000 +8 000 | - | 33°31'18.0"N 126°55'34.0"E | - | RNP 0.15 | 1 min (Outbound timing) |

HOLDING PROCEDURE

| Holding Identification | Path Descriptor | Waypoint Identifier | Fly-over | Course/Track °M(°T) | Time (min) | Turn direction | Altitude (ft) | Speed (kt) | Coordinates | VPA/ RDH | Navigation specification | Remarks |
|------------------------|-----------------|---------------------|----------|------------------------|---------------|----------------|------------------|---------------|----------------------------|-------------|--------------------------|---------|
| RNP Z RWY 07 | HM | YUMIN | Y | 126(118.3) | 1.0 | L | -7 000 +4 000 | -230 | 33°27'25.7"N 126°13'15.5"E | - | RNP 0.5 | - |

Change : Withdrawal of speed restriction for YUMIN, LIMSO, PETAA.

**INSTRUMENT
APPROACH
CHART - ICAO**

AERODROME ELEV 119 ft
HEIGHTS RELATED TO
THR RWY 07 - ELEV 87 ft

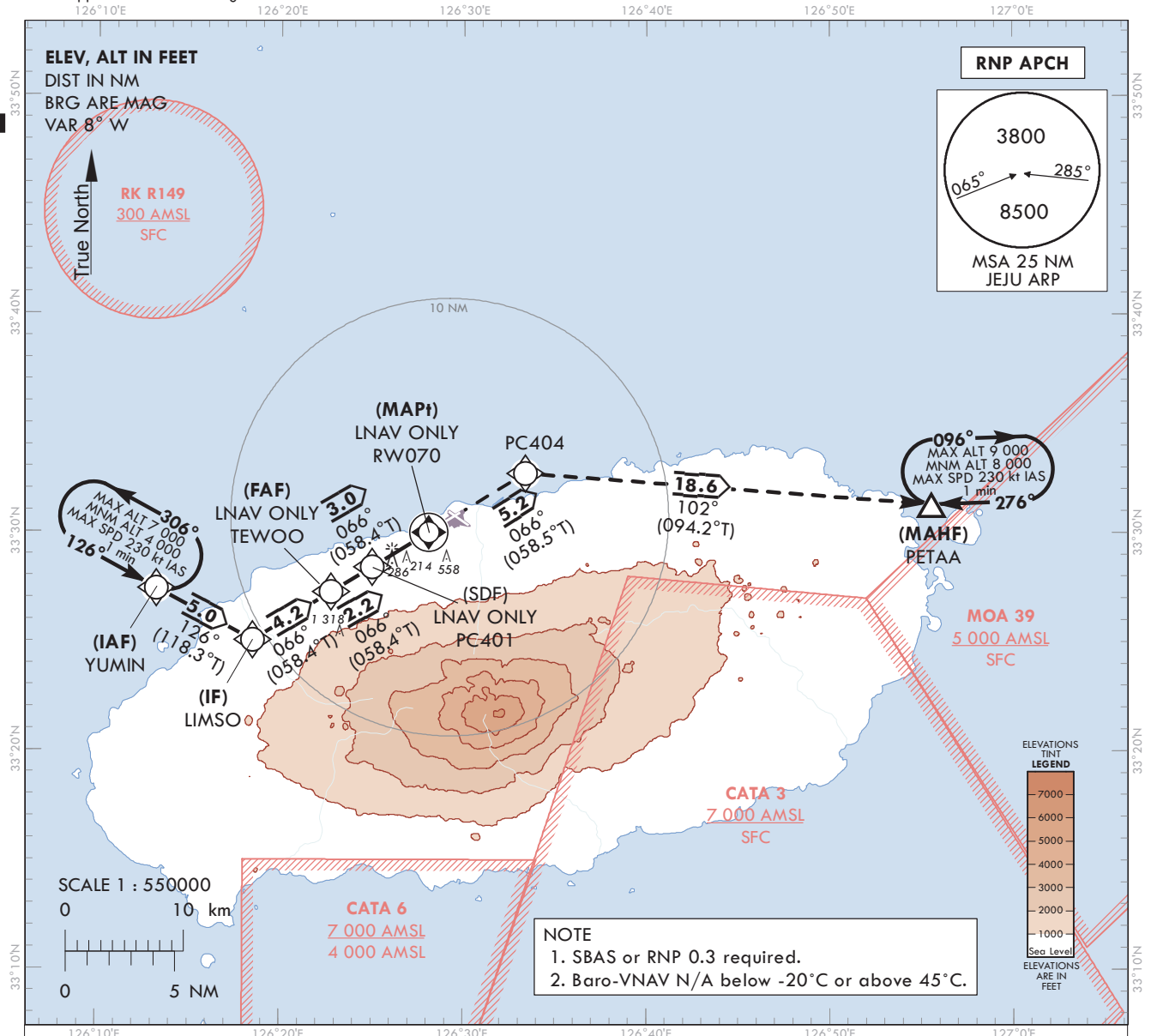
JEJU APP 121.2
JEJU TWR 124.05
118.2
118.55

KASS
CH60369
K07A
RDH : 50

JEJU/Jeju Intl(RKPC)

RNP Y RWY 07

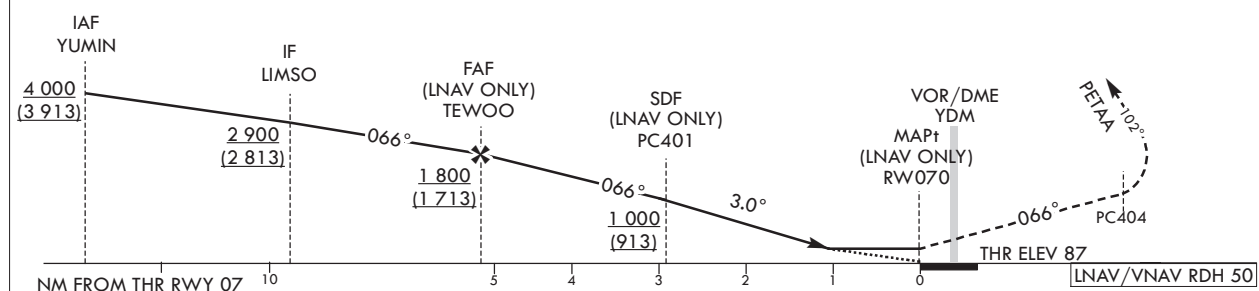
Note : Approach under ICAO Flight Procedures.



TRANSITION ALT 14 000
TRANSITION LVL FL 140

MISSED APPROACH

Climb to 8 000 ft on track of 066° to PC404, then RIGHT turn on track of 102° to PETAA and Hold at 8 000 ft.



| OCA (H) | | A | B | C | D |
|----------------------|-----------|-----------|---|---|---|
| Straight-in Approach | LPV | 430 (343) | | | |
| | LNAV/VNAV | 560 (473) | | | |
| | LNAV | 640 (553) | | | |

| | | Knots | 60 | 90 | 120 | 150 | 180 |
|-----------------|---------|-------|-----|-----|-----|-----|-----|
| Rate of descent | V/V fpm | 318 | 478 | 637 | 796 | 955 | |

* Timing Not authorized for defining MAPt.
* Circling Not authorized.

Change : Information of MAG VAR(7° W → 8° W).

JEJU/Jeju Intl(RKPC)
RNP Y RWY 07

AERONAUTICAL DATA TABULATION

Instrument Approach Procedure Coding Tables

RNP Y RWY 07

| Serial Number | Path Descriptor | Waypoint Identifier | Fly-over | Course/Track °M(°T) | Distance (NM) | Turn direction | Altitude (ft) | Speed (kt) | Coordinates | VPA/RDH | Navigation specification | Remarks |
|---------------|-----------------|---------------------|----------|---------------------|---------------|----------------|------------------|------------|------------------------------|----------|--------------------------|----------------------------|
| 001 | IF | YUMIN | - | - | - | - | +4 000 | - | 33°27'25.7"N 126°13'15.5"E | - | RNP APCH | IAF |
| 002 | TF | LMSO | - | 126(118.3) | 5.0 | - | +2 900 | - | 33°25'03.0"N 126°18'31.0"E | - | RNP APCH | IF |
| 003 | TF | TEWOO | - | 066(058.4) | 4.2 | - | +1 800 | - | 33°27'15.3"N 126°22'47.5"E | - | RNP APCH | FAF(LNAV only) |
| 004 | TF | PC401 | - | 066(058.4) | 2.2 | - | +1 000 | - | 33°28'24.5"N 126°25'01.8"E | - | RNP APCH | SDF(LNAV only) |
| 005 | TF | RW070 | Y | 066(058.4) | 3.0 | - | +640 | - | 33°29'59.57"N 126°28'06.50"E | -3.00/50 | RNP APCH | MAPt(LNAV only) |
| 006 | TF | PC404 | - | 066(058.5) | 5.2 | - | - | - | 33°32'42.3"N 126°33'23.4"E | - | RNP APCH | - |
| 007 | TF | PETAA | Y | 102(094.2) | 18.6 | - | - | - | 33°31'18.0"N 126°55'34.0"E | - | RNP APCH | - |
| 008 | HM | PETAA | Y | 276(268.2) | - | R | -9 000 +8 000 | -230 | 33°31'18.0"N 126°55'34.0"E | - | RNP APCH | 1 min (Outbound timing) |

HOLDING PROCEDURE

| Holding Identification | Path Descriptor | Waypoint Identifier | Fly-over | Course/Track °M(°T) | Time (min) | Turn direction | Altitude (ft) | Speed (kt) | Coordinates | VPA/RDH | Navigation specification | Remarks |
|------------------------|-----------------|---------------------|----------|---------------------|------------|----------------|------------------|------------|----------------------------|---------|--------------------------|---------|
| RNP Y RWY 07 | HM | YUMIN | Y | 126(118.3) | 1.0 | L | -7 000 +4 000 | -230 | 33°27'25.7"N 126°13'15.5"E | - | RNAV 1 | - |

Change : Information of coordinates and remarks for TEWOO, PC401, RW070.

JEJU/Jeju Intl(RKPC)
RNP Y RWY 07

FAS DATA BLOCK INFORMATION

INPUT DATA

| Parameters | Values |
|--|------------------|
| Operation Type | 0 |
| SBAS Provider Identifier | 6 (KASS) |
| Airport Identifier | RKPC |
| Runway Number | 07 |
| Runway Letter | 0 (None) |
| Approach Performance Designator | 0 |
| Route Indicator | Y |
| Reference Path Data Selector | 0 |
| Reference Path Identifier | K07A |
| LTP/FTP Latitude | 33°29'59.5750"N |
| LTP/FTP Longitude | 126°28'06.4995"E |
| LTP/FTP Height above ellipsoid (meters) | 51.8 |
| FPAP Latitude | 33°30'53.5555"N |
| Delta FPAP Latitude (seconds) | 53.9805 |
| FPAP Longitude | 126°29'51.5130"E |
| Delta FPAP Longitude (seconds) | 105.0135 |
| Approach Threshold Crossing Height (TCH) | 50.0 |
| Approach TCH Units Selector | 0 (Feet) |
| Glidepath Angle (GPA) | 3.00 |
| Course Width at Threshold | 105.00 |
| Length Offset | 0 |
| Horizontal Alert Limit (HAL) | 40.0 |
| Vertical Alert Limit (VAL) | 50.0 |

OUTPUT DATA

| | |
|----------------------|--|
| Data Block | 60 03 10 0B 12 07 00 00 01 37 30 0B 2E 68 60 0E C7 3D 46 36 06 16 B9 A5 01 6B 34 03 F4 01 2C 01 64 00 C8 FA 11 46 E3 B9 |
| Calculated CRC Value | 1146E3B9 |

INTENTIONALLY

LEFT

BLANK

VOR RWY 07

| | | | | | |
|----------|----------|----------|----------|----------|---------|
| 126°10'E | 126°20'E | 126°30'E | 126°40'E | 126°50'E | 127°0'E |
|----------|----------|----------|----------|----------|---------|



* Timing Not authorized for defining MAPt.
* Circling Not authorized.

AIRAC AIP AMDT 6/25
Effective : 1600UTC 9 JUL 2025

JEJU/Intl(RKPC)
VOR RWY 07

AERONAUTICAL DATA TABULATION

| VOR Approach to RWY 07 from AKBIN(IAF) | | |
|--|---|------------------------------|
| Fix/point | | Coordinates |
| AKBIN(IAF) | - 12 DME ARC /12.00 NM YDM | 33°31'21.5"N 126°14'55.3"E |
| D12.0 YDM(IF) | - BRG 64.88°/12.00 NM YDM | 33°24'10.5"N 126°17'12.1"E |
| D8.4 YDM(SDF) | - BRG 64.92°/8.40 NM YDM | 33°26'07.9"N 126°20'48.9"E |
| D6.3 YDM(FAF) | - BRG 64.94°/6.30 NM YDM | 33°27'16.3"N 126°22'55.4"E |
| D4.5 YDM(SDF) | - BRG 64.95°/4.50 NM YDM | 33°28'14.9"N 126°24'43.9"E |
| D2.4 YDM(MAPt) | - BRG 65.66°/2.40 NM YDM | 33°29'23.3"N 126°26'50.6"E |
| THR RWY 07 | Final approach descent angle 3.14°(FAF - SDF) / 3.02°(SDF - THR) | 33°29'59.57"N 126°28'06.50"E |
| YDM VOR/DME | | 33°30'41.3"N 126°29'15.3"E |
| D4.0 YDM | - BRG 64.99°/4.00 NM YDM | 33°32'51.3"N 126°33'16.9"E |
| PETAA | - BRG 96.03°/22.00 NM YDM | 33°31'18.0"N 126°55'34.0"E |

Change : Information of radial.

OFFICE OF CIVIL AVIATION

AIRAC AIP AMDT 6/25
Effective : 1600UTC 9 JUL 2025

**INSTRUMENT
APPROACH
CHART - ICAO**

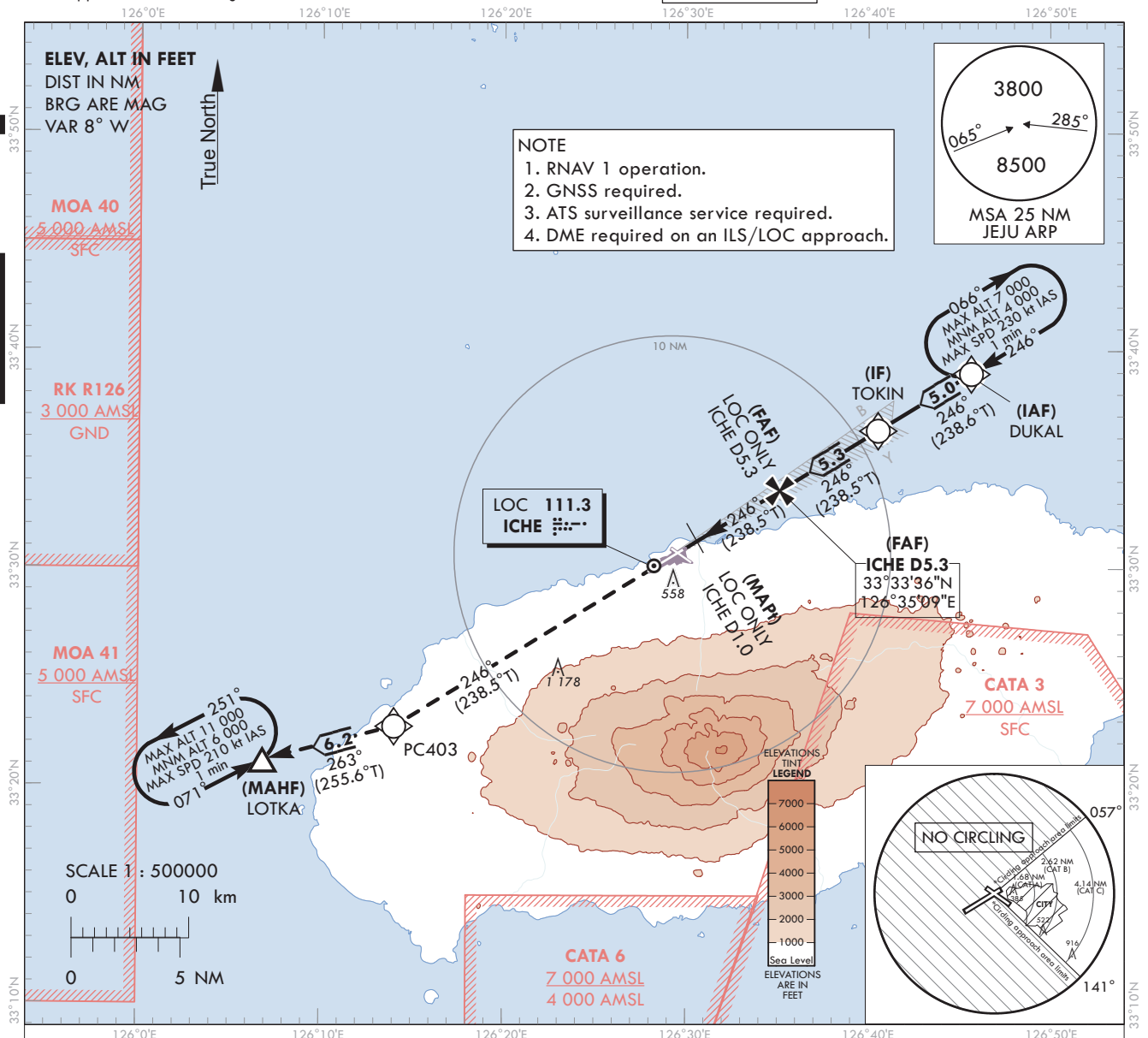
AERODROME ELEV 119 ft
HEIGHTS RELATED TO
THR RWY 25 - ELEV 76 ft

JEJU APP 121.2
124.05
JEJU TWR 118.2
118.55

JEJU/Jeju Intl(RKPC)

ILS Z or LOC Z RWY 25

Note : Approach under ICAO Flight Procedures.

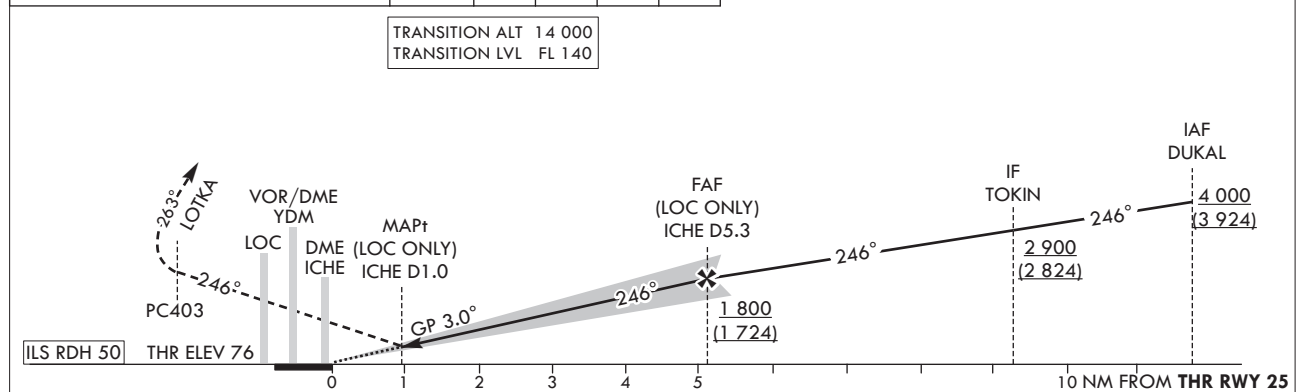


| RECOMMENDED PROFILE(LOC ONLY) | | DME ICHÉ | 5 | 4 | 3 | 2 |
|--|--|----------|------------------|------------------|----------------|--------------|
| Final Approach Gradient 5.37%, 326 ft/NM | | ALT(HGT) | 1 702 (1 626) | 1 376 (1 300) | 1 050 (974) | 724 (648) |

TRANSITION ALT 14 000
TRANSITION LVL FL 140

MISSED APPROACH

Climb to 6 000 ft on track of 246° to PC403, then RIGHT turn on track of 263° to LOTKA and Hold at 6000 ft.



| OCA (H) | | A | B | C | D | DL |
|----------------------|-------|-----------|-----------|---------------|-----|----|
| Straight-in Approach | CAT-I | 276 (200) | | | | |
| | LOC | 540 (464) | | | | |
| Circling | | 680 (561) | 880 (761) | 1 370 (1 251) | N/A | |

| Rate of descent | Knots | 60 | 90 | 120 | 150 | 180 |
|-----------------|-------|-----|-----|-----|-----|-----|
| V/V fpm | | 318 | 478 | 637 | 796 | 955 |

* Timing Not authorized for defining MAPt.
* OCH for Circling related to aerodrome ELEV 119 ft.

Change : Information of MAG VAR(7° W → 8° W), holding procedure, recommended profile and OCA(H).

AERONAUTICAL DATA TABULATION

| ILS Z or LOC Z Approach to RWY 25 from DUKAL(IAF) | | |
|---|---------------|----------------|
| Fix/point | Coordinates | |
| DUKAL(IAF) | 33°38'58.6"N | 126°45'38.8"E |
| TOKIN(IF) - BRG 246.36°/5.00 NM | 33°36'21.9"N | 126°40'32.2"E |
| D5.3 ICHE(FAF LOC only) - BRG 246.32°/5.34 NM ICHE | 33°33'36.4"N | 126°35'08.7"E |
| D1.0 ICHE(MAPt LOC only) - BRG 246.26°/1.00 NM ICHE | 33°31'20.0"N | 126°30'43.0"E |
| THR RWY 25 | 33°30'53.56"N | 126°29'51.51"E |
| DME ICHE | 33°30'51.4"N | 126°29'39.1"E |
| PC403 | 33°22'44.4"N | 126°14'03.0"E |
| LOTKA | 33°21'11.1"N | 126°06'52.2"E |

Change : Information of radial.

**INSTRUMENT
APPROACH
CHART - ICAO**

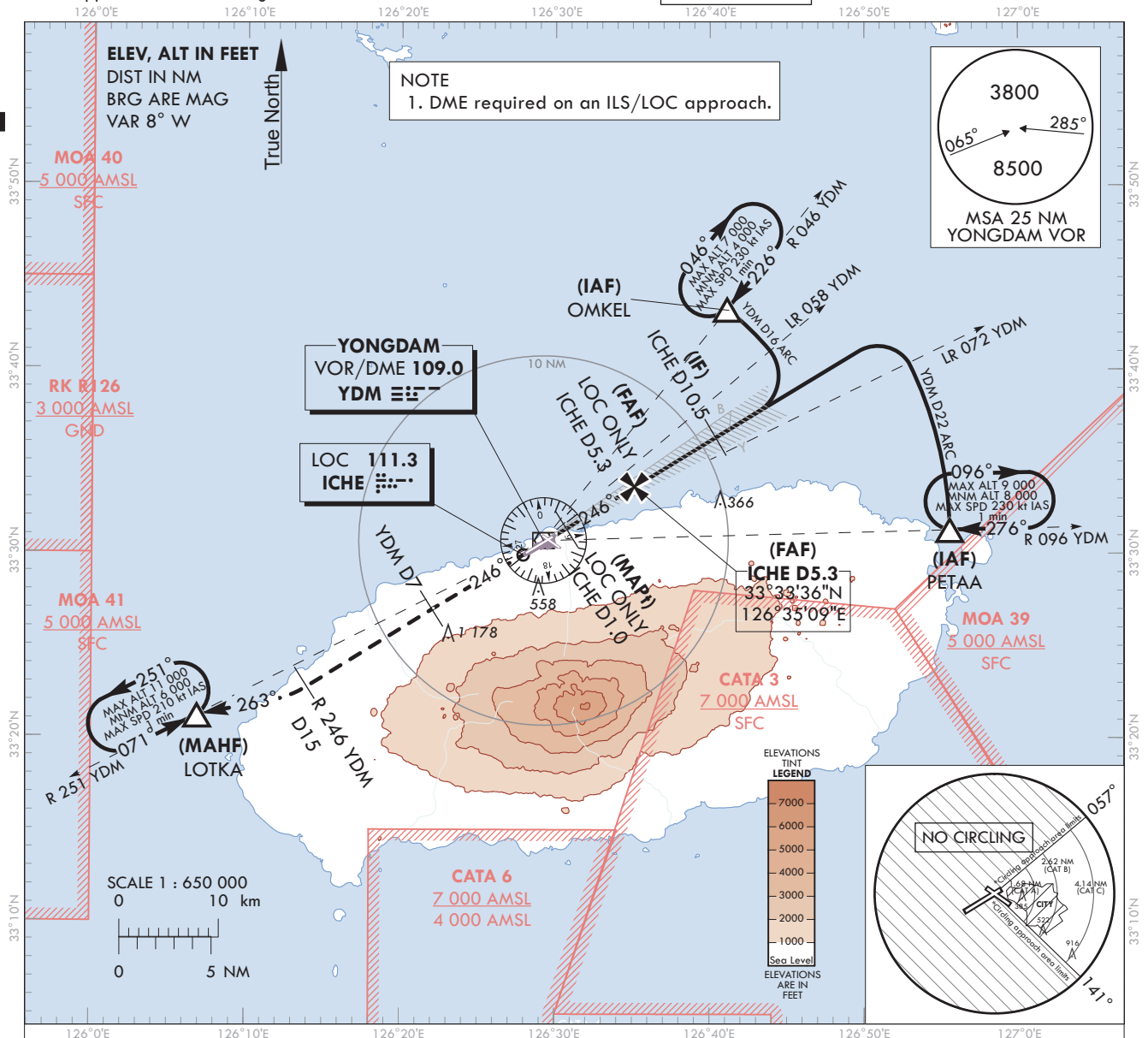
AERODROME ELEV 119 ft
HEIGHTS RELATED TO
THR RWY 25 - ELEV 76 ft

JEJU APP 121.2
124.05
JEJU TWR 118.2
118.55

JEJU/Jeju Intl(RKPC)

ILS Y or LOC Y RWY 25

Note : Approach under ICAO Flight Procedure.



| RECOMMENDED PROFILE(LOC ONLY) | DME ICHD | 5 | 4 | 3 | 2 |
|--|----------|------------------|------------------|----------------|--------------|
| Final Approach Gradient 5.37%, 326 ft/NM | ALT(HGT) | 1 702 (1 626) | 1 376 (1 300) | 1 050 (974) | 724 (648) |

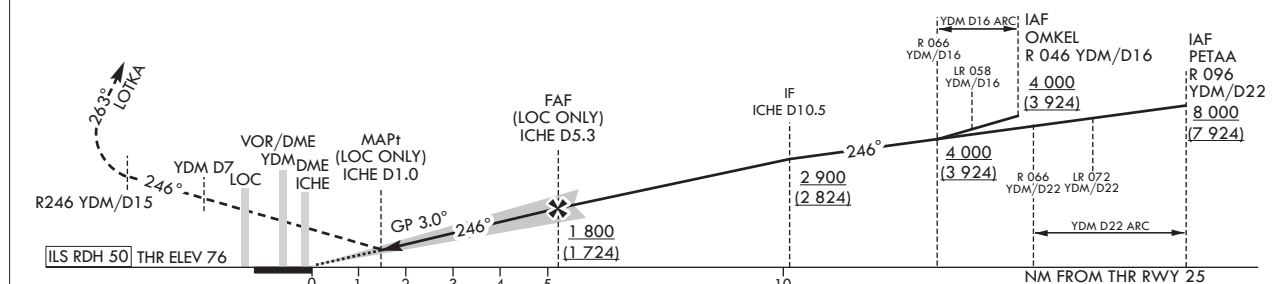
TRANSITION ALT 14 000
TRANSITION LVL FL 140

MISSED APPROACH

Climb straight ahead until YDM D7 to Intercept R 246 YDM/D15
turn RIGHT HDG 263° to LOTKA and Hold at 6 000 ft.

NOTE

1. Missed approach turn limited to maximum of 210 kt IAS.



| OCA (H) | A | B | C | D | DL |
|----------------------|-------|-----------|-----------|-------------|-----|
| Straight-in Approach | CAT-I | 276 (200) | | | |
| | LOC | 540 (464) | | | |
| Circling | | 680 (561) | 880 (761) | 370 (1 251) | N/A |

| Rate of descent | Knots | 60 | 90 | 120 | 150 | 180 |
|-----------------|-------|-----|-----|-----|-----|-----|
| V/V fpm | | 318 | 478 | 637 | 796 | 955 |

* Timing Not authorized for defining MAPt.

* OCH for Circling related to aerodrome ELEV 119 ft.

Change : Information of MAG VAR(7° W → 8° W), recommended profile and OCA(H).

AERONAUTICAL DATA TABULATION

| ILS Y or LOC Y Approach to RWY 25 from OMKEL(IAF) or PETAA(IAF) | | |
|---|---------------------------|------------------------------|
| Fix/point | | Coordinates |
| OMKEL(IAF) | 16 DME ARC /16.00 NM YDM | 33°43'16.2"N 126°41'08.0"E |
| PETAA(IAF) | 22 DME ARC /22.00 NM YDM | 33°31'18.0"N 126°55'34.0"E |
| D10.5 ICHE(IF) | BRG 246.31°/10.50 NM ICHE | 33°36'18.2"N 126°40'24.9"E |
| D5.3 ICHE(FAF LOC only) | BRG 246.26°/5.34 NM ICHE | 33°33'36.4"N 126°35'08.7"E |
| D1.0 ICHE(MAPt LOC only) | BRG 246.22°/1.00 NM ICHE | 33°31'20.0"N 126°30'43.0"E |
| THR RWY 25 | | 33°30'53.56"N 126°29'51.51"E |
| DME ICHE | | 33°30'51.4"N 126°29'39.1"E |
| YDM VOR/DME | | 33°30'41.3"N 126°29'15.3"E |
| D7.0 YDM | BRG 246.66°/7.00 NM YDM | 33°26'59.7"N 126°22'08.6"E |
| D15.0 YDM | BRG 245.93°/15.00 NM YDM | 33°22'45.9"N 126°14'01.5"E |
| LOTKA | BRG 263.03°/21.00 NM YDM | 33°21'11.1"N 126°06'52.2"E |

Change : Information of radial.

**INSTRUMENT
APPROACH
CHART - ICAO**

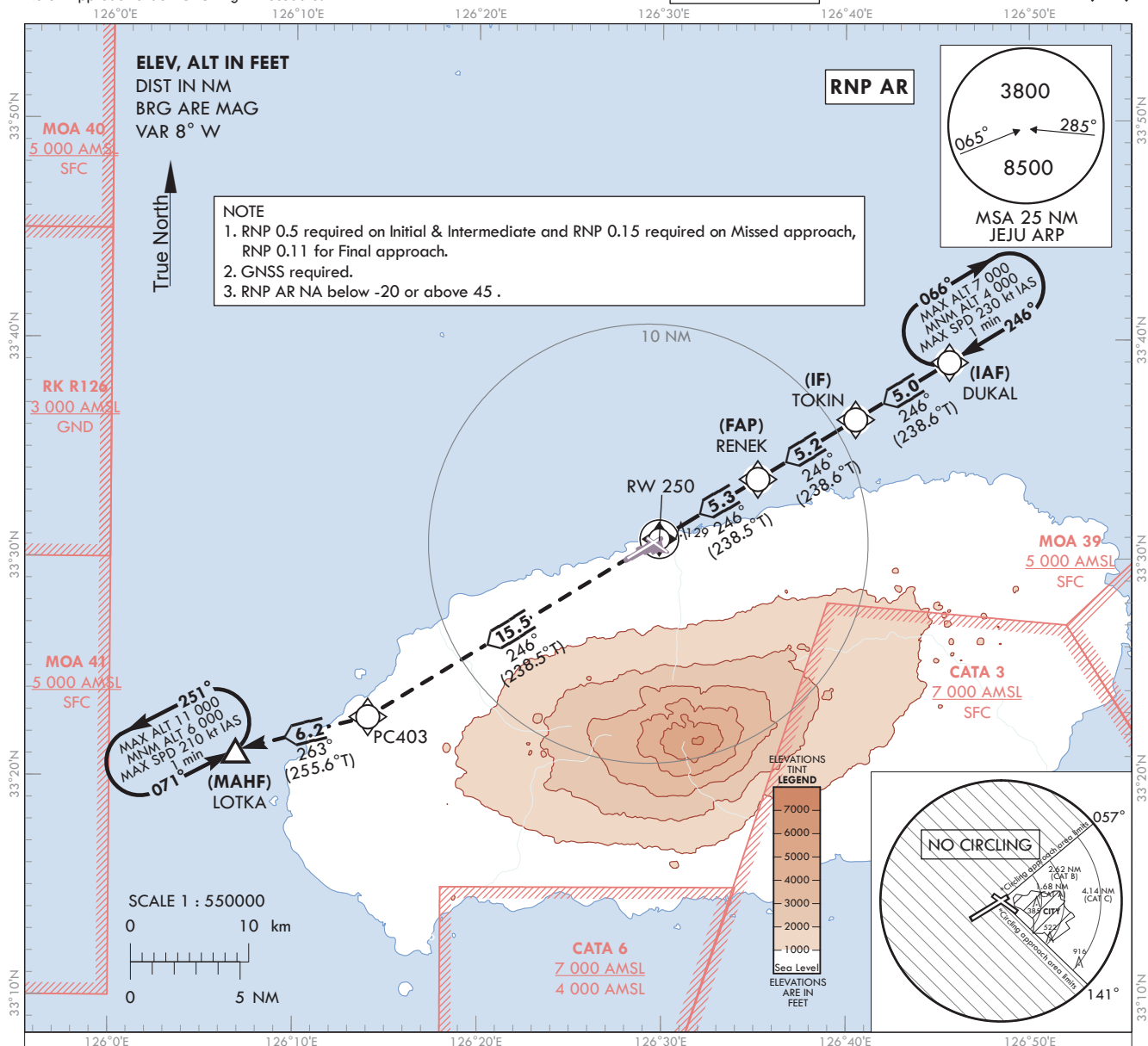
AERODROME ELEV 119 ft
HEIGHTS RELATED TO
THR RWY 25 - ELEV 76 ft

| | |
|----------|--------|
| JEJU APP | 121.2 |
| JEJU TWR | 124.05 |
| JEJU TWR | 118.2 |
| JEJU TWR | 118.55 |

JEJU/Jeju Intl(RKPC)

Note : Approach under ICAO Flight Procedures.

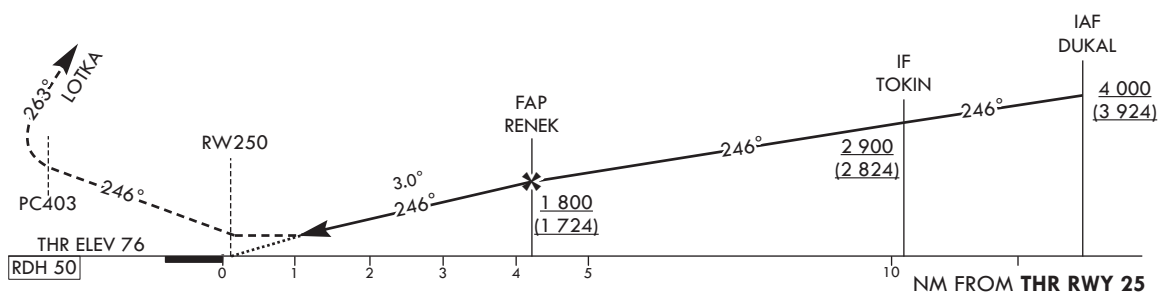
RNP Z RWY 25(AR)



TRANSITION ALT 14 000
TRANSITION LVL FL 140

MISSSED APPROACH

Climb to 6 000 ft on tack of 246° to PC403, then RIGHT turn on track of 263° to LOTKA.



| OCA (H) | | A | B | C | D | | | | | | | |
|----------------------|----------|-----------|-----------|---------------|-----|--|---------|-----|-----|-----|-----|-----|
| Straight-in Approach | RNP 0.11 | 330 (254) | | | | | Knots | 60 | 90 | 120 | 150 | 180 |
| | | | | | | Rate of descent | V/V fpm | 319 | 478 | 637 | 796 | 956 |
| Circling | | 680 (561) | 880 (761) | 1 370 (1 251) | N/A | * Timing Not authorized for defining MAPt. * OCH for Circling related to aerodrome ELEV 119 ft. | | | | | | |

Change : Establishment of instrument approach procedure(RNP Z RWY 25(AR)).

OFFICE OF CIVIL AVIATION

AIRAC AIP AMDT 7/25
Effective : 1600UTC 6 AUG 2025

AERONAUTICAL DATA TABULATION

Instrument Approach Procedure Coding Tables

RNP Z RWY 25(AR)

| Serial Number | Path Descriptor | Waypoint Identifier | Fly-over | Course/Track °M(T) | Distance (NM) | Turn direction | Altitude (ft) | Speed (kt) | Coordinates | VPA/RDH | Navigation specification | Remarks |
|---------------|-----------------|---------------------|----------|--------------------|---------------|----------------|-------------------|------------|------------------------------|----------|--------------------------|----------------------------|
| 001 | IF | DUKAL | - | - | - | - | +4 000 | - | 33°38'58.6"N 126°45'38.8"E | - | RNP 0.5 | IAF |
| 002 | TF | TOKIN | - | 246(238.6) | 5.0 | - | +2 900 | - | 33°36'21.9"N 126°40'32.2"E | - | RNP 0.5 | IF |
| 003 | TF | RENEK | - | 246(238.6) | 5.2 | - | +1 800 | - | 33°33'38.6"N 126°35'13.1"E | - | RNP 0.11 | FAP |
| 004 | TF | RW250 | Y | 246(238.5) | 5.3 | - | - | - | 33°30'53.56"N 126°29'51.51"E | -3.00/50 | RNP 0.11 | - |
| 005 | TF | PC403 | - | 246(238.5) | 15.5 | - | - | - | 33°22'44.4"N 126°14'03.0"E | - | RNP 0.15 | - |
| 006 | TF | LOTKA | Y | 263(255.6) | 6.2 | - | - | - | 33°21'11.1"N 126°06'52.2"E | - | RNP 0.15 | - |
| 007 | HM | LOTKA | Y | 071(063.2) | - | L | -11 000 +6 000 | -210 | 33°21'11.1"N 126°06'52.2"E | - | RNP 0.15 | 1 min (Outbound timing) |

HOLDING PROCEDURE

| Holding Identification | Path Descriptor | Waypoint Identifier | Fly-over | Course/Track °M(T) | TIME (min) | Turn direction | Altitude (ft) | Speed (kt) | Coordinates | VPA/RDH | Navigation specification | Remarks |
|------------------------|-----------------|---------------------|----------|--------------------|------------|----------------|------------------|------------|----------------------------|---------|--------------------------|---------|
| RNP RWY 25 | HM | DUKAL | Y | 246(238.6) | 1.0 | R | -7 000 +4 000 | -230 | 33°38'58.6"N 126°45'38.8"E | - | RNP 0.5 | - |

Change : Establishment of instrument approach procedure(RNP Z RWY 25(AR)).

**INSTRUMENT
APPROACH
CHART - ICAO**

AERODROME ELEV 119 ft
HEIGHTS RELATED TO
THR RWY 25 - ELEV 76 ft

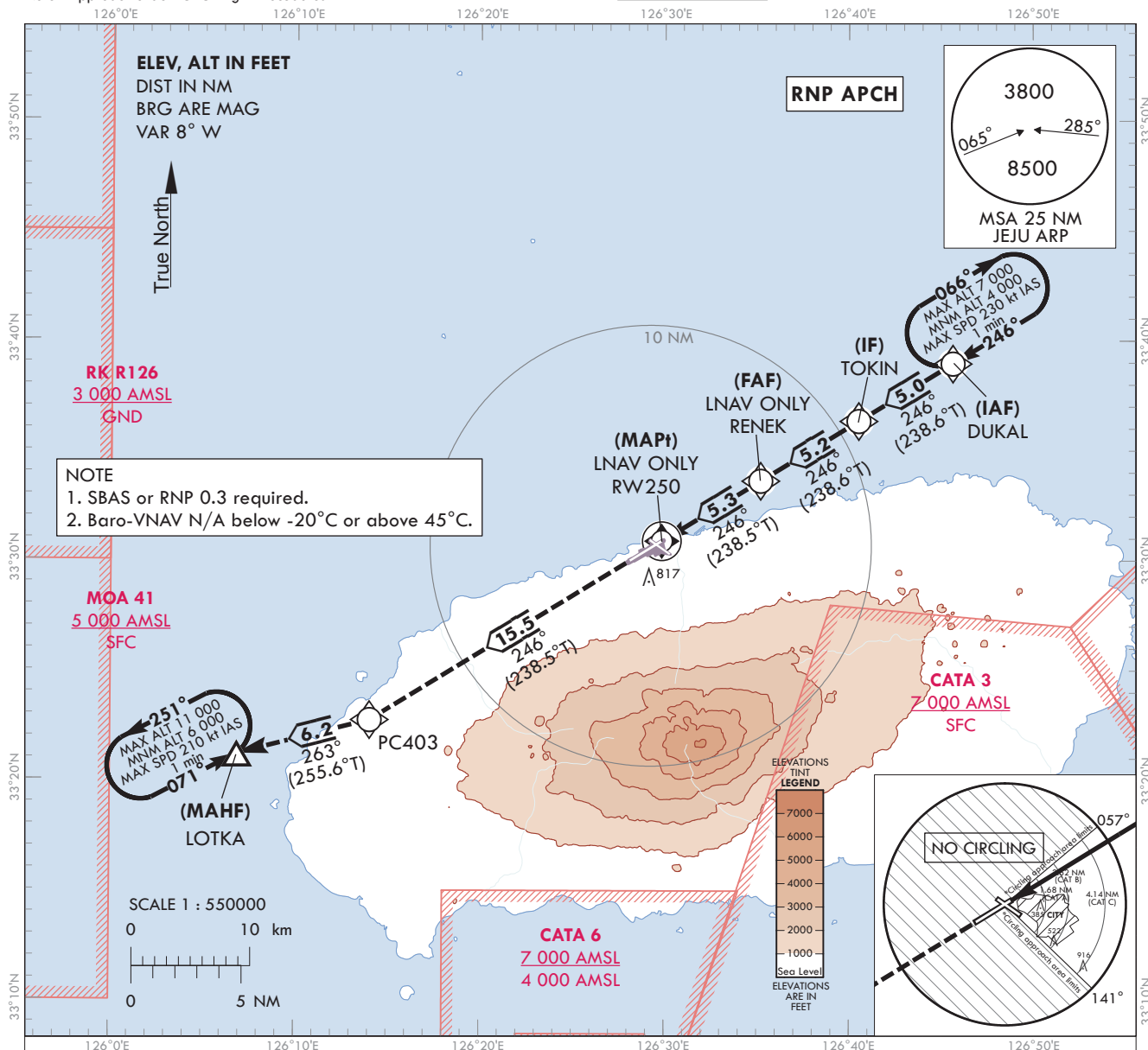
JEJU APP 121.2
124.05
JEJU TWR 118.2
118.55

KASS
CH86038
K25A
RDH : 50

JEJU/Jeju Intl(RKPC)

RNP Y RWY 25

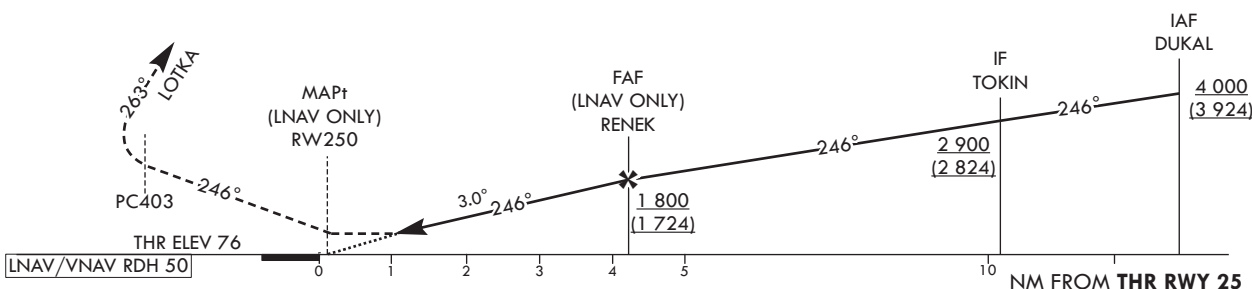
Note : Approach under ICAO Flight Procedures.



TRANSITION ALT 14 000
TRANSITION LVL FL 140

MISSED APPROACH

Climb to 6 000 ft on track of 246° to PC403, then RIGHT turn on track of 263° to LOTKA.



| OCA (H) | | A | B | C | D |
|----------------------|-----------|-----------|-----------|---------------|-----|
| Straight-in Approach | LPV | 470 (394) | | | |
| | LNAV/VNAV | 620 (544) | | | |
| | LNAV | 810 (734) | | | |
| Circling | | 680 (561) | 880 (761) | 1 370 (1 251) | N/A |

| | | Knots | 60 | 90 | 120 | 150 | 180 |
|-----------------|---------|-------|-----|-----|-----|-----|-----|
| Rate of descent | V/V fpm | 319 | 478 | 637 | 796 | 956 | |
| | | | | | | | |

* Timing Not authorized for defining MAPt.

* OCH for Circling related to aerodrome ELEV 119 ft.

Change : Amended chart symbol.

AERONAUTICAL DATA TABULATION

Instrument Approach Procedure Coding Tables

RNP Y RWY 25

| Serial Number | Path Descriptor | Waypoint Identifier | Fly-over | Course/Track °M(T) | Distance (NM) | Turn direction | Altitude (ft) | Speed (kt) | Coordinates | VPA/RDH | Navigation specification | Remarks |
|---------------|-----------------|---------------------|----------|--------------------|---------------|----------------|-------------------|------------|------------------------------|----------|--------------------------|----------------------------|
| 001 | IF | DUKAL | - | - | - | - | +4 000 | - | 33°38'58.6"N 126°45'38.8"E | - | RNP APCH | IAF |
| 002 | TF | TOKIN | - | 246(238.6) | 5.0 | - | +2 900 | - | 33°36'21.9"N 126°40'32.2"E | - | RNP APCH | IF |
| 003 | TF | RENEK | - | 246(238.6) | 5.2 | - | +1 800 | - | 33°33'38.6"N 126°35'13.1"E | - | RNP APCH | FAF |
| 004 | TF | RW250 | Y | 246(238.5) | 5.3 | - | +810 | - | 33°30'53.56"N 126°29'51.51"E | -3.00/50 | RNP APCH | MAPt |
| 005 | TF | PC403 | - | 246(238.5) | 15.5 | - | - | - | 33°22'44.4"N 126°14'03.0"E | - | RNP APCH | - |
| 006 | TF | LOTKA | Y | 263(255.6) | 6.2 | - | - | - | 33°21'11.1"N 126°06'52.2"E | - | RNP APCH | - |
| 007 | HM | LOTKA | Y | 071(063.2) | - | L | -11 000 +6 000 | -210 | 33°21'11.1"N 126°06'52.2"E | - | RNP APCH | 1 min (Outbound timing) |

HOLDING PROCEDURE

| Holding Identification | Path Descriptor | Waypoint Identifier | Fly-over | Course/Track °M(T) | TIME (min) | Turn direction | Altitude (ft) | Speed (kt) | Coordinates | VPA/RDH | Navigation specification | Remarks |
|------------------------|-----------------|---------------------|----------|--------------------|------------|----------------|------------------|------------|----------------------------|---------|--------------------------|---------|
| RNP RWY 25 | HM | DUKAL | Y | 246(238.6) | 1.0 | R | -7 000 +4 000 | -230 | 33°38'58.6"N 126°45'38.8"E | - | RNAV 1 | - |

JEJU/Jeju Intl(RKPC)
RNP Y RWY 25

FAS DATA BLOCK INFORMATION

INPUT DATA

| | |
|--|---------------|
| Operation Type | 0 |
| SBAS Provider Identifier | 6 (KASS) |
| Airport Identifier | RKPC |
| Runway Number | 25 |
| Runway Letter | 0 (None) |
| Approach Performance Designator | 0 |
| Route Indicator | Y |
| Reference Path Data Selector | 0 |
| Reference Path Identifier | K25A |
| LTP/FTP Latitude | 333053.5555N |
| LTP/FTP Longitude | 1262951.5130E |
| LTP/FTP Height above ellipsoid (meters) | 48.5 |
| FPAP Latitude | 332959.5750N |
| Delta FPAP Latitude (seconds) | -53.9805 |
| FPAP Longitude | 1262806.4995E |
| Delta FPAP Longitude (seconds) | -105.0135 |
| Approach Threshold Crossing Height (TCH) | 50.0 |
| Approach TCH Units Selector | 0 (Feet) |
| Glidepath Angle (GPA) | 3.00 |
| Course Width at threshold | 105.00 |
| Length Offset | 0 |
| Horizontal Alert Limit (HAL) | 40.0 |
| Vertical Alert Limit (VAL) | 50.0 |

OUTPUT DATA

| | |
|----------------------|--|
| Data Block | 60 03 10 0B 12 19 C8 00 01 35 32 0B E7 0D 62 0E 32 72 49 36 E5 15 47 5A FE 95 CB FC F4 01 2C 01 64 00 C8 FA 90 9E B9 FF |
| Calculated CRC Value | 909EB9FF |

Change : Establishment of instrument approach procedure(RNP Y RWY 25).

INTENTIONALLY

LEFT

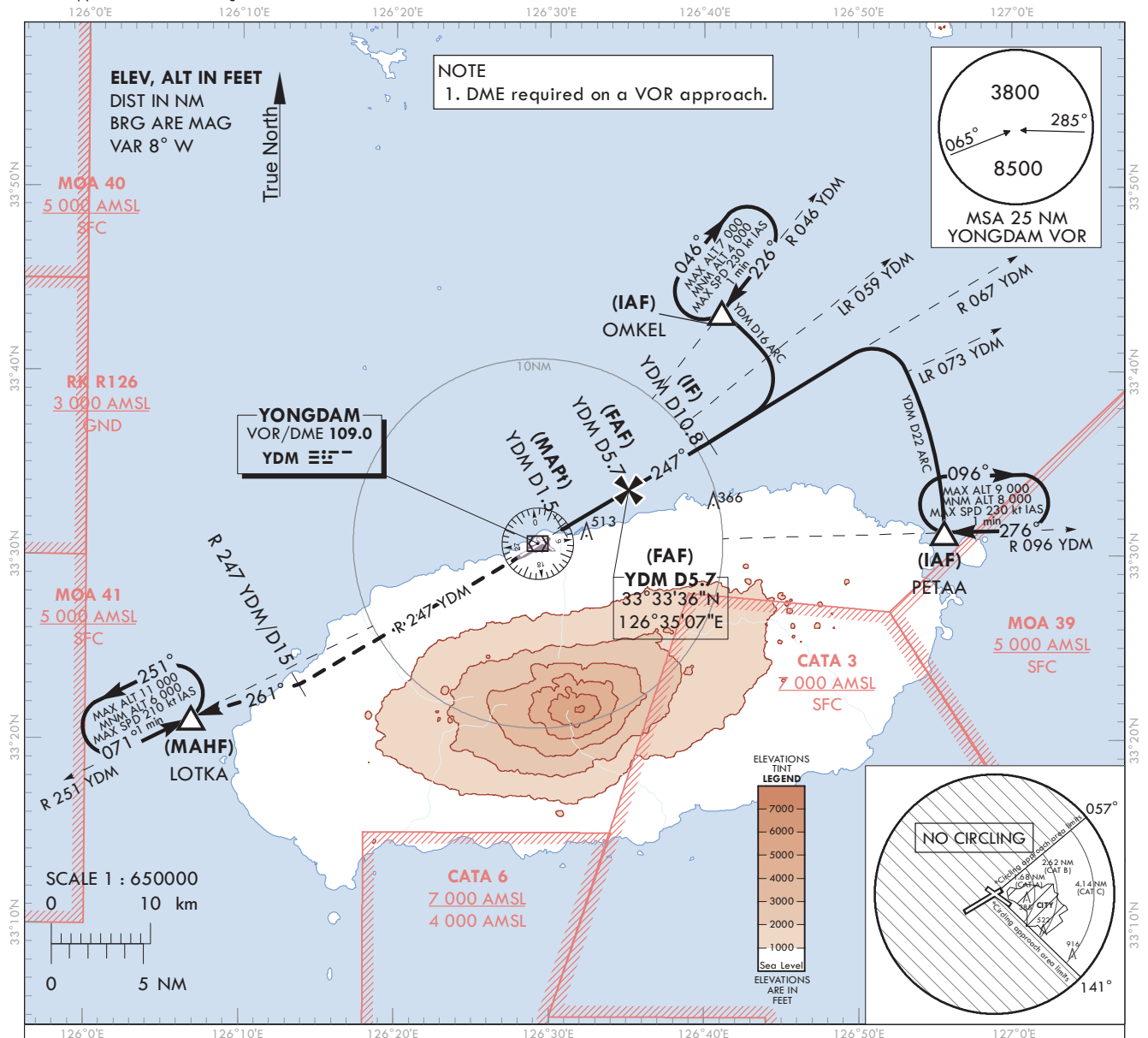
BLANK

AERODROME ELEV 119 ft
HEIGHTS RELATED TO
THR RWY 25 - ELEV **76 ft**

| | |
|----------|--------|
| JEJU APP | 121.2 |
| | 124.05 |
| JEJU TWR | 118.2 |
| | 118.55 |

VOR RWY 25

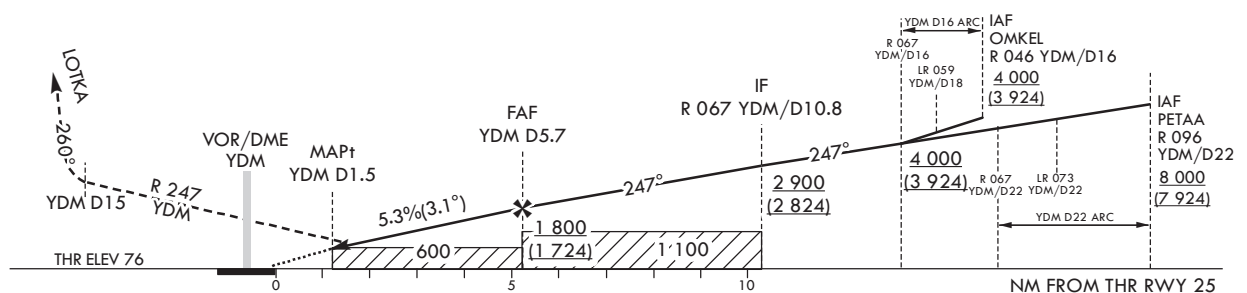
Note : Approach under ICAO Flight Procedures.



Climb on R 247 YDM until 15 DME, then turn Right
HDG 261° to LOTKA and Hold at 6 000 ft.

| RECOMMENDED PROFILE | DME YDM | 5 | 4 | 3 | 2.2 |
|--|----------|------------------|------------------|--------------|--------------|
| Final Approach Gradient 5.34%, 325 ft/NM | ALT(HGT) | 1 573 (1 497) | 1 248 (1 172) | 924 (848) | 664 (588) |

| | |
|----------------|--------|
| TRANSITION ALT | 14 000 |
| TRANSITION LVL | FL 140 |



| OCA (H) | A | B | C | D |
|----------------------|-----------|-----------|---------------|-----|
| Straight-in Approach | 600 (524) | | | |
| Circling | 680 (561) | 880 (761) | 1 370 (1 251) | N/A |

* Timing Not authorized for defining MAPt.
* OCH for Circling realated to aerodrome
ELEV 119 ft.

Change : Page control.

JEJU/Intl(RKPC)
VOR RWY 25

AERONAUTICAL DATA TABULATION

| VOR Approach to RWY 25 from OMKEL(IAF) or PETAA(IAF) | | |
|--|------------------------------------|------------------------------|
| Fix/point | | Coordinates |
| OMKEL(IAF) | - 16 DME ARC/16.00 NM YDM | 33°43'16.2"N 126°41'08.0"E |
| PETAA(IAF) | - 22 DME ARC/22.00 NM YDM | 33°31'18.0"N 126°55'34.0"E |
| D10.8 YDM(IF) | - BRG 247.09°/10.80 NM YDM | 33°36'12.8"N 126°40'22.1"E |
| D5.7 YDM(FAF) | - BRG 247.05°/5.70 NM YDM | 33°33'36.4"N 126°35'07.1"E |
| D1.5 YDM(MAPt) | - BRG 247.01°/1.50 NM YDM | 33°31'27.2"N 126°30'47.4"E |
| THR RWY 25 | Final approach descent angle 3.06° | 33°30'53.56"N 126°29'51.51"E |
| YDM VOR/DME | | 33°30'41.3"N 126°29'15.3"E |
| D15.0 YDM | - BRG 246.99°/15.00 NM YDM | 33°22'59.4"N 126°13'51.7"E |
| LOTKA | - BRG 260.69°/21.00 NM YDM | 33°21'11.1"N 126°06'52.2"E |

Change : Page control.